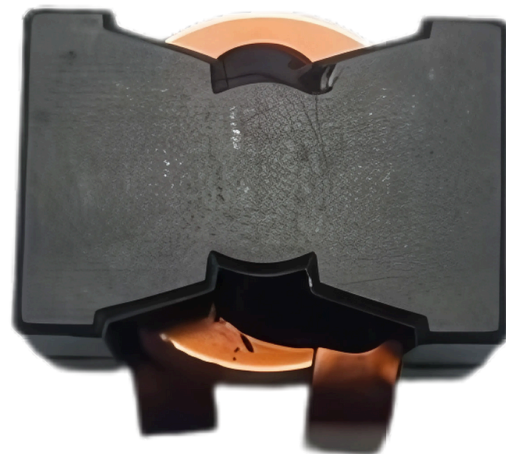


## SMD HIGH CURRENT POWER INDUCTOR

### Feature and Benefits

- Utilizes flat wire and surface-mount device (SMD) configuration.
- Supports high current handling with low DC resistance.
- Operates reliably within a temperature range of -40°C to +125°C.
- Magnetically shielded design ensures minimal electromagnetic interference (EMI).
- Supplied in tray packaging, suitable for storage from -40°C to +80°C.
- Withstands up to three solder reflow cycles at +260°C for 40 seconds each, with cooling to room temperature between cycles.
- Moisture Sensitivity Level (MSL) rated at 1 — offers unlimited floor life under conditions below 30°C and 85% relative humidity.



### Applications

- For high-efficiency DC/DC converters.
- Suitable for single/multiphase buck converters.
- Audio filtering applications.
- Optimized for high-current boost converters.

### Technical specifications

Part number	① Inductance μH ±10%	② DCR		③ SRF		④ Isat			⑤ Irms	
		mΩ		MHz		A typical			A typical	
		typ	max.	typical	10% drop	20% drop	30% drop		20°C rise	40°C rise
PH26A-332KL	3.3	2.25	2.5	40	91.0	92.5	93.6		22	30
PH26A-472KL	4.7	2.25	2.5	30	59.0	61.2	62.4		22	30
PH26A-682KL	6.8	2.25	2.5	25	42.0	45.0	45.9		22	30
PH26A-103KL	10	2.25	2.5	20	28.0	31.2	32.1		22	30
PH26A-153KL	15	2.25	2.5	16	18.0	21.2	21.9		22	30
PH26A-223KL	22	2.25	2.5	15	12.0	14.0	15.0		22	30

**Remark:**

1. Inductance is measured with a LCR meter Agilent 4284A or equivalent.

Test frequency at 500kHz

2. DC resistance is measured with Keithley 580 Milliohm Meter, or equivalent.

Reference ambient temperature 25°C

3. SRF measured using an Agilent 4395A network analyzer and an Agilent

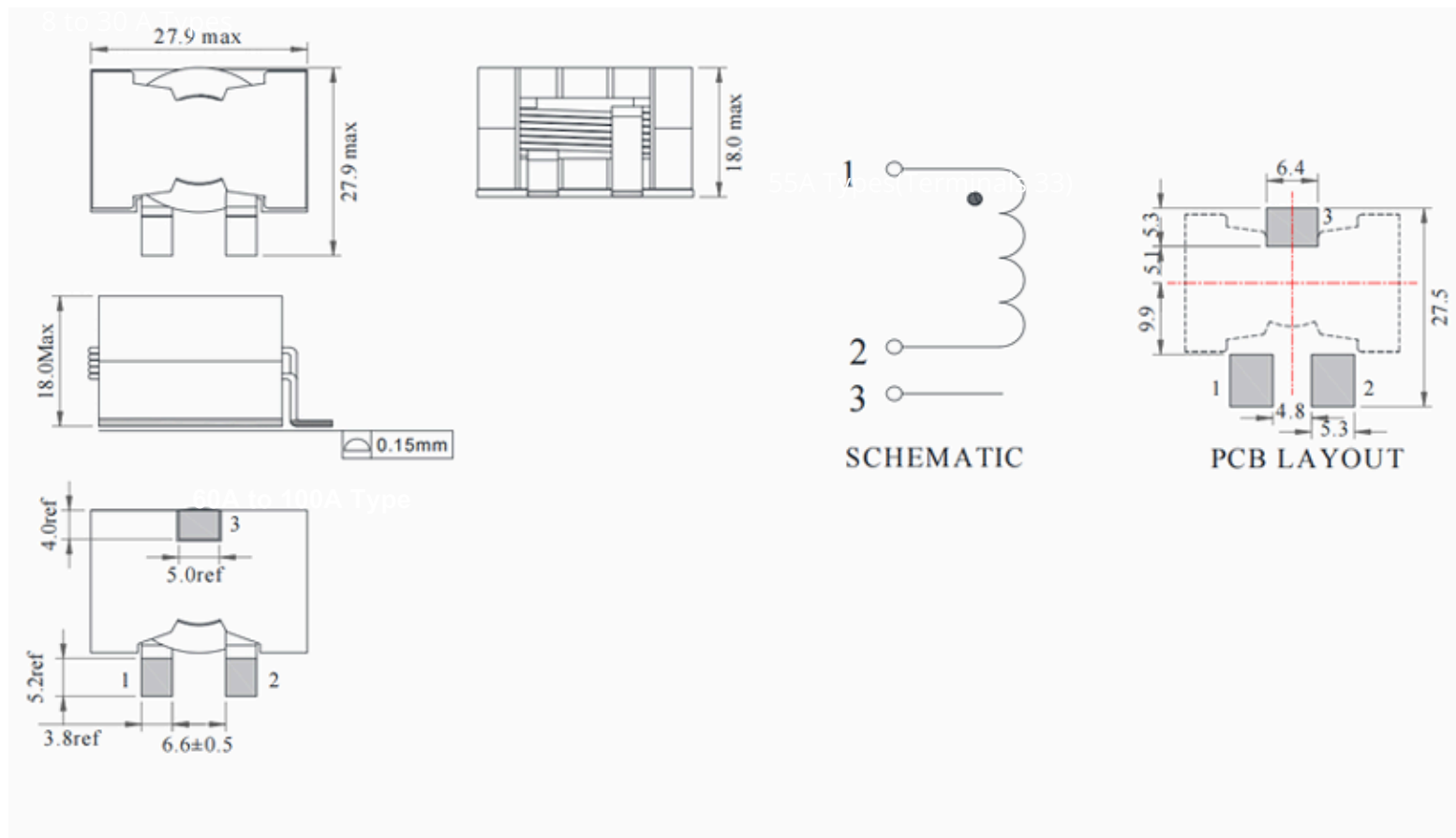
16193A test fixture.

4. DC current at 25°C that causes the specified Inductance drop from its value without current.

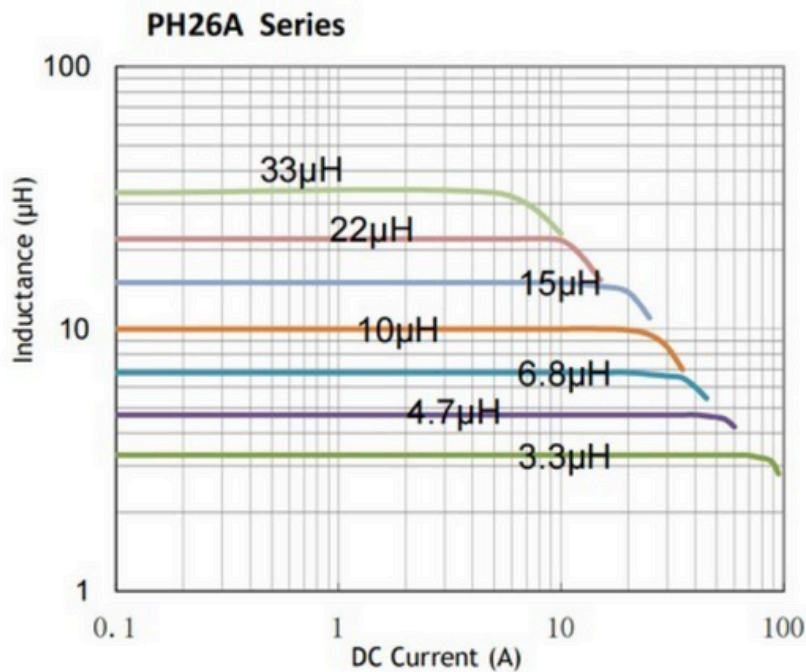
5. Current that causes the specified temperature rise from 25°C ambient. This information is for reference only and does not represent absolute maximum ratings.

6. Electrical specifications at 25°C

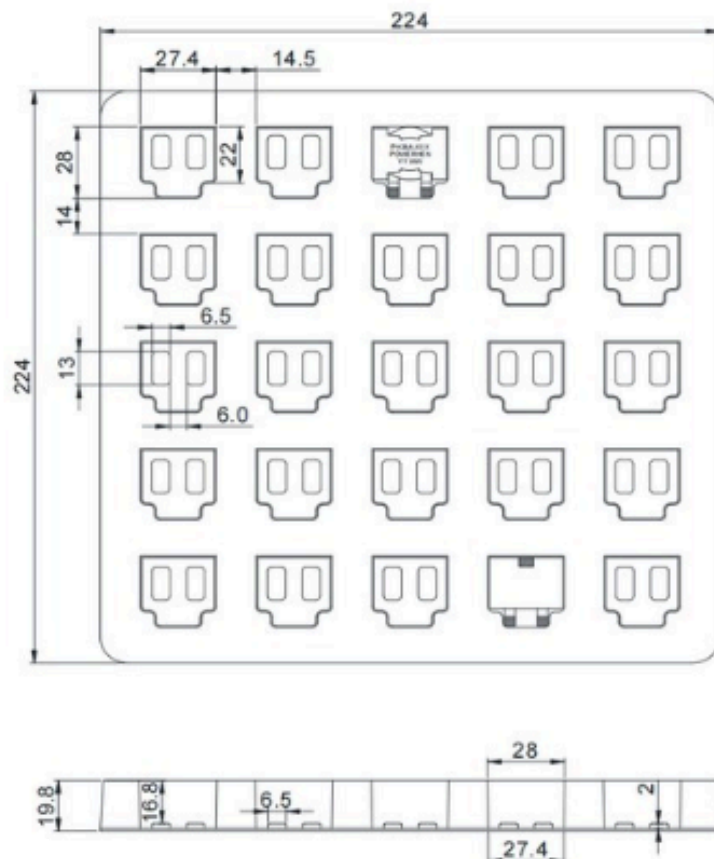
## MECHANICAL DETAILS



## Electrical Characteristic Curve



### ■ Packaging Specification - tray: [mm]



Weight: 35.3g/pcs  
Packaging: 392pcs/Tray