

BL 21633

Very High Performance Three phase Multi-Stage EMI/EMC Filter

FEATURES

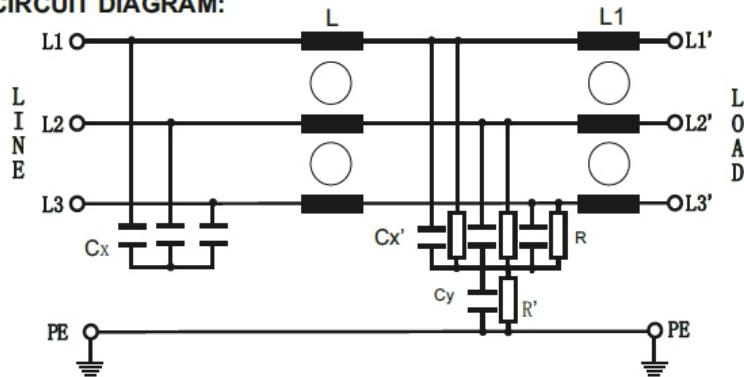
- > Rated Current include 10A to 64A
- > Dual stage Filter
- > Available with Touch safe Terminal, and Screw Terminal
- > Very High performance Design
- > Compact and Easy to use & Install
- > Agency Approval to UL (1283)/UL60939,CE

ELECTRIC SCHEMATIC

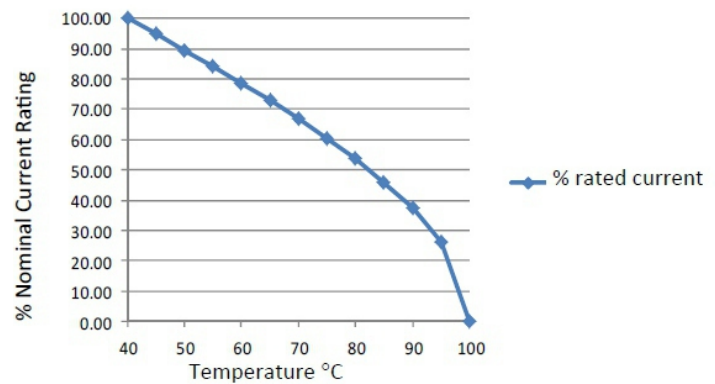


BL 21633

CIRCUIT DIAGRAM:



Temperature Derating Curve for EMC Filters Rated at 40°C Ambient and 100°C Maximum



HOW TO BUY

BI21633X-YY-ZZ

ZZ- Connection Type
T- Feed Through Terminal
S- Screw Terminal

Rated Current

A-Low Leakage
E-Enhanced
Blank -Regular

Series

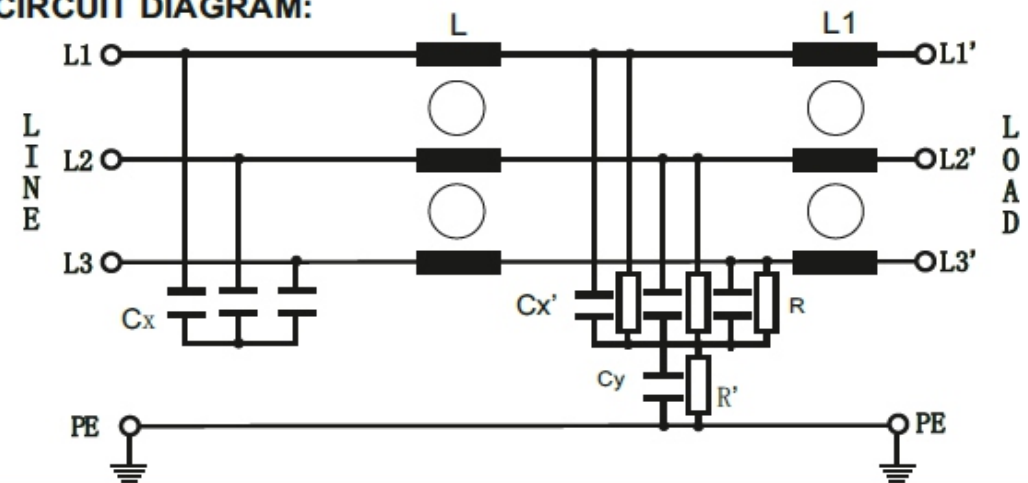
Example of Order BL21633-25-T (Regular Type)

Typical Application

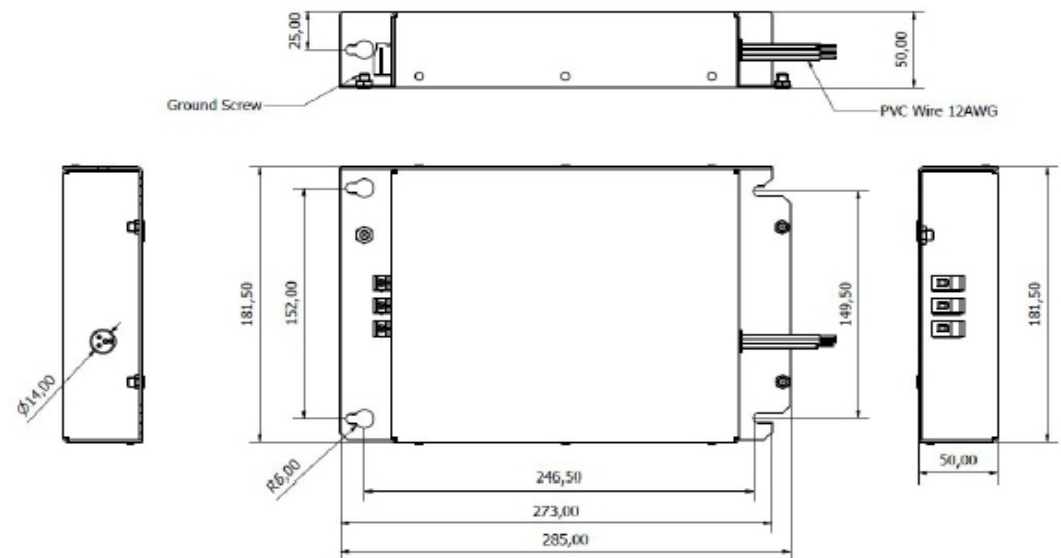
- > Electrical and Electronic Equipment
- > Motor Control Automatio
- > VFD, UPS
- > Building Automation
- > Industrial Application
- > Industrial application
- > Three Phase Power supply
- > Medical Equipment
- > Inverter & Converter
- > Various noisy applications requiring high Filter performance

BL21633-25-T	Rev. 0
CHARACTERISTICS:	
Rated Voltage:	480VAC max
Rated Current at Ambient:	25A @ 50°C
Operating Frequency:	50-60HZ
Climatic Class (IEC60068-1):	25/100/21
Temperature Range:	-25°C to +100°C
Over load Current:	1.5 x Rated Ct. for 1 Min
Operational Leakage current : (Non Symmetrical voltage 480V +/-3% ,IEC 61000-2-4 and Total C +/-20%)	33 mA max
Worst case Leakage current (P-GND): (2 phases are open and Total C +/-20%)	<190 mA max
DCR @ 25°C (+/-15%) :	15 mΩ
Test Voltage (100%) for 2 sec:-	P-P: 1100VDC
	P-GND: 3000VDC
Ingress Protection:	IP 20
Weight (approximate):	2.0Kg
FILTER PARAMETERS:	
Total Inductance (P-P'+N-N') @10KHz:	1.49mH +50%,-30%
Total Capacitance (P-P/P-N) @1KHz:	1.37μF +/- -20%
Total Capacitance (P/N-GND) @1KHz:	88nF +/- -20%
Total Resistance (P-P/P-N):	2M Ω +/- -10%
Total Resistance (P/N-GND):	2.0M Ω +/- -10%
APPROVALS:	
ROHS,REACH CE	Approved By: AJAY
	Date: 17-06-2024

CIRCUIT DIAGRAM:



MECHANICAL DIMENSION (mm):



Note: Housing matl.- AL, 1.5mm Thk
Terminal Block - 10mm²

TOLERANCE: +/-1.5 mm