

General Performance DC EMI FILTER

Feature and Benefits

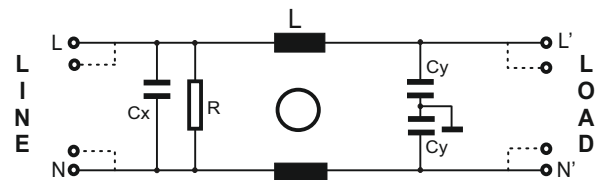
- BL1230 Single-stage DC filters are designed for easy and fast chassis mounting.
- The BL 1230 Filter can be use to cover broad range of uses and they can offer a good size/amperages ratio
- BL 1230 General purpose Line Filter for DC Application upto125Amp



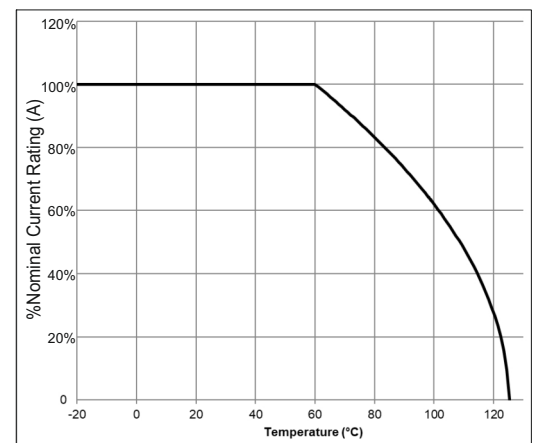
Technical specifications

Maximum continuous operating voltage	80VDC
Operating Frequency	DC
Rated Currents	15 to 125A @50°C
High Potential Test voltage	L-GND 2550 VDC for 2 sec L - N 1450 VDC for 2 sec
Temperature range (operation and storage)	-25°C to +100°C (25/100/21)
Certified to	UL 1283,EC/EN60939 (Applies to AC and DC Applications)
Flammability Corresponding to	UL 94V-2 better

ELECTRICAL SCHEMATIC




Temperature Derating Curve for EMC Filters Rated at 50°C Ambient and 100°C Maximum



Typical Application

- Electrical and electronic equipment
- Telecom system
- EV applications
- Rack Mounted
- Mobile Systems
- Office automation and datacom equipment

FILTER SELECTION TABLE

Filters**	Rated current @50°C	Leakage current @250VAC/50Hz	Connetion type Input/Output	Weight
	A	mA		Kg
BL1230-15-S	15	NA	S	0.75
BL1230-30-S	30	NA	S	1.2
BL1230-60-S	60	NA	S	1.8
BL1230-100-S	100	NA	S	2.5
BL1230-125-S	125	NA	S	2.5

**TYPICAL INSERTION
LOSS, dB (50/50 Ohm)**

Common Mode

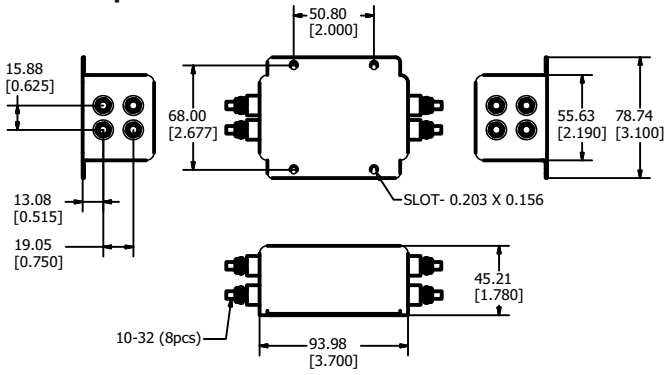
Current Rating	Frequency – MHz									
	.01	.05	.1	.15	.5	1	3	5	10	30
15A	-	1	12	20	41	45	61	63	47	39
30A	-	4	15	23	47	59	64	56	44	36
60A	-	-	9	17	38	40	59	50	39	34
100A	-	-	10	18	38	39	53	50	35	21
125A	-	-	12	18	30	32	44	49	29	18

Differential Mode

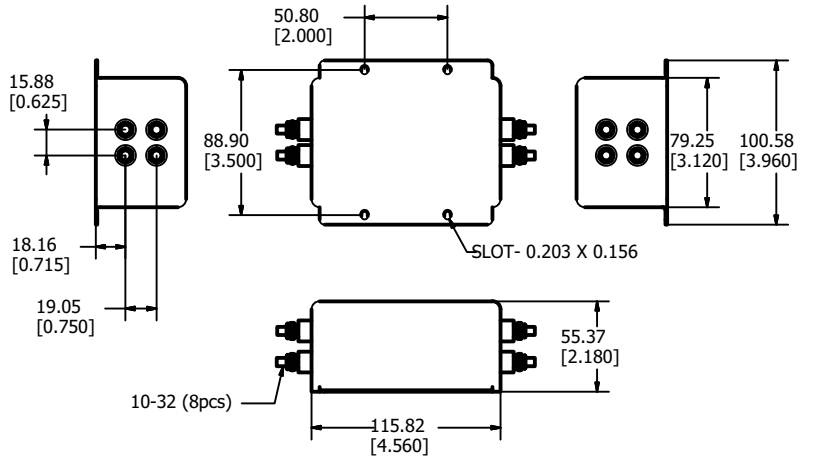
Current Rating	Frequency – MHz									
	.01	.05	.1	.15	.5	1	3	5	10	30
15A	7	22	27	30	30	36	56	49	38	31
30A	7	22	28	31	32	59	56	51	41	28
60A	15	30	36	40	40	35	60	51	39	32
100A	14	29	35	39	33	30	53	53	41	30
125A	14	24	35	39	40	28	53	60	42	33

MECHANICAL DETAILS

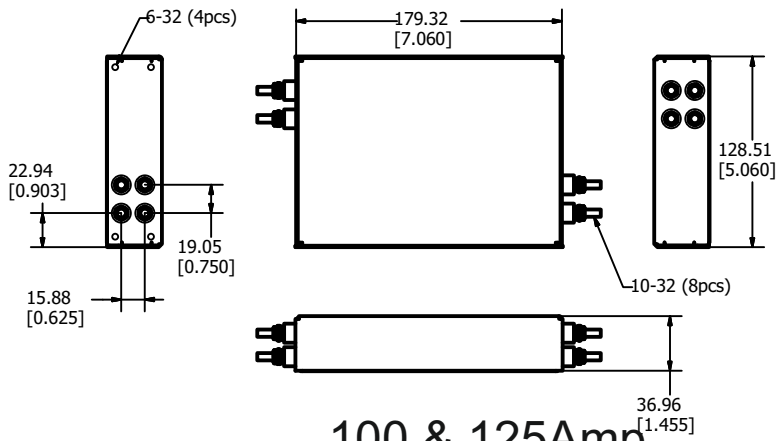
15Amp



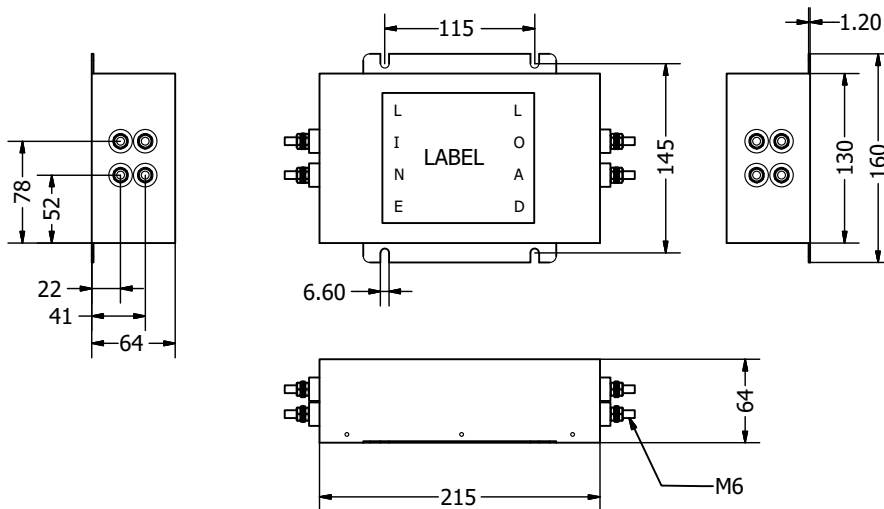
30Amp



60Amp



100 & 125Amp



**All Dimension are in mm