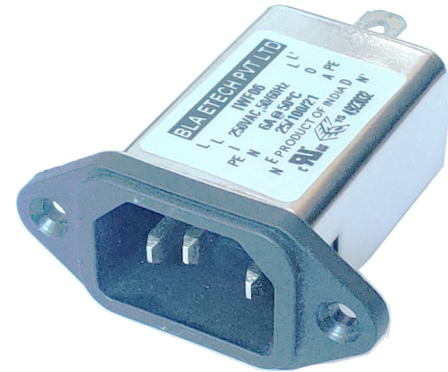


## General Performance IEC INLET EMI FILTER

### Feature and Benefits

- The IWF IEC inlet filter combines an IEC inlet and mains filter with excellent filter attenuation in a small form factor. Choosing the IWF product line brings you the rapid availability of a standard filter associated with the necessary safety acceptances. Standard IEC connector filters are a practical solution helping you to pass EMI system approval in a short time.
- Exceptional conducted attenuation performance, based on chokes with high saturation resistance and excellent thermal behavior
- Wide mounting flanges available
- Different output connections offering maximum flexibility for assembly
- Custom-specific versions are available on request
- Offer IP 66 rating for washable electronic to use in humid location



### Technical specifications

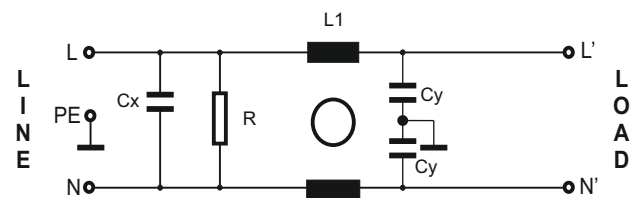
Maximum continuous operating voltage	250VAC, 50/60Hz
Operating Frequency	DC to 400Hz
Rated Currents	1 to 20A @50°C
High Potential Test voltage	L-GND 2550 VDC for 2 sec L-GND 3500 VDC for 2 sec (B types) L - N 1100 VDC for 2 sec
Temperature range (operation and storage)	-25°C to +100°C (25/100/21)
Certified to	UL 1283, EC/EN60939 (Applies to AC and DC Applications)
Flammability Corresponding to	UL 94V-2 better

- Rated current from 1 to 10 A
- Single stage filter with good attenuation performance
- IP 66 approved

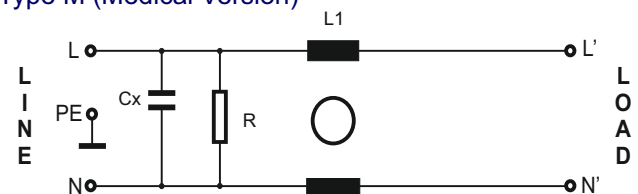
### Typical Application

- Electrical and electronic equipment
- Consumer goods/Industrial Application
- Machinery & Building Automation
- Medical equipment
- Electronic data processing equipment
- Office automation and datacom equipment
- Vending Machine
- Washable Electronics part & Printer

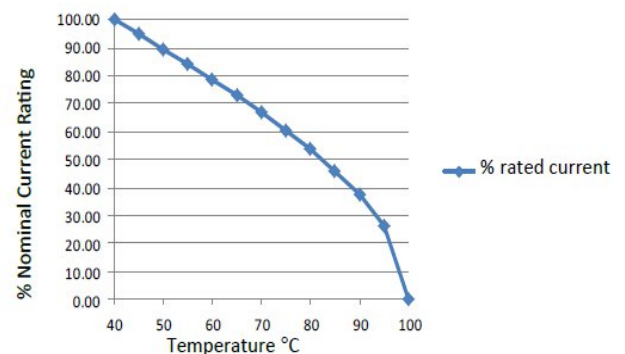
### ELECTRICAL SCHEMATIC



#### Type M (Medical Version)



Temperature Derating Curve for EMC Filters Rated at 50°C Ambient and 100°C Maximum

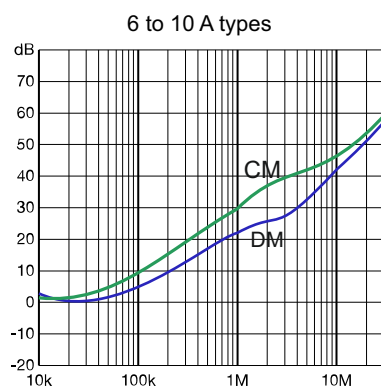
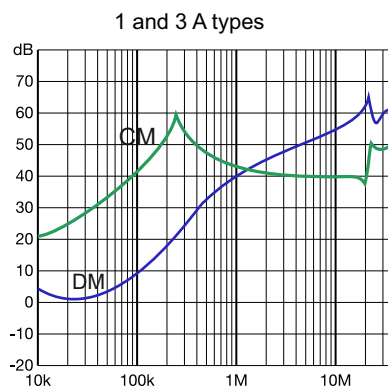


## FILTER SELECTION TABLE

PART NO	RATED CURRENT @50°C	LEKAGE CURRENT 250VAC,50Hz	INDUCTANCE L (mH)	CAPACITANCE Cx (uF)	CAPACITANCE Cy (nF)	CONNITION TYPE
IWF01	1	0.8 mA	12	150	6.6	FASTON
IWF03	3	0.8 mA	5	150	6.6	FASTON
IWF06	6	0.8 mA	1.3	150	6.6	FASTON
IWF10	10	0.8 mA	0.5	150	6.6	FASTON
IWF01-M	1	-	12	150	-	FASTON
IWF03-M	3	-	5	150	-	FASTON
IWF06-M	6	-	1.3	150	-	FASTON
IWF10-M	10	-	0.5	150	-	FASTON

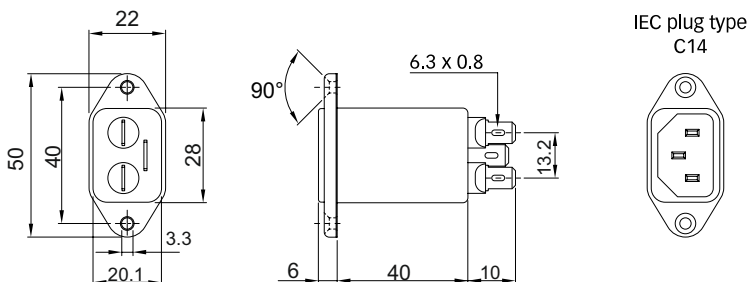
Maximum leakage under normal operating conditions. Note: if the neutral line is interrupted, worst case leakage could reach twice this level.

## TYPICAL INSERTION LOSS, dB (50/50 Ohm)



## MECHANICAL DETAILS

standard 1 to 10Amp



IP 66 Version 1 to 10Amp

