

## High Performance EMI Filter

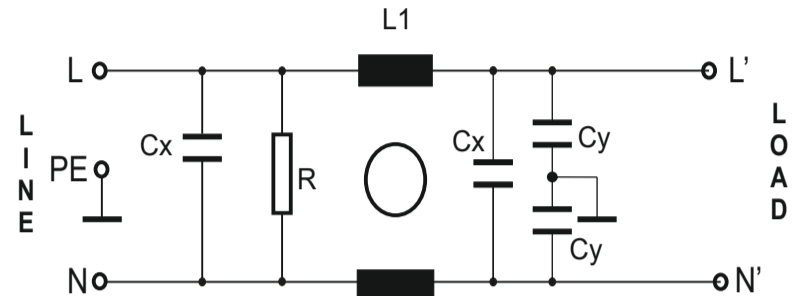


- Rated current from 5 to 30 A
- Single stage filter
- High differential mode performance
- Optional medical version (Type B)
- Optional safety version (Type A)

### Approvals:



### 1 CIRCUIT DIAGRAM:



### Technical specifications

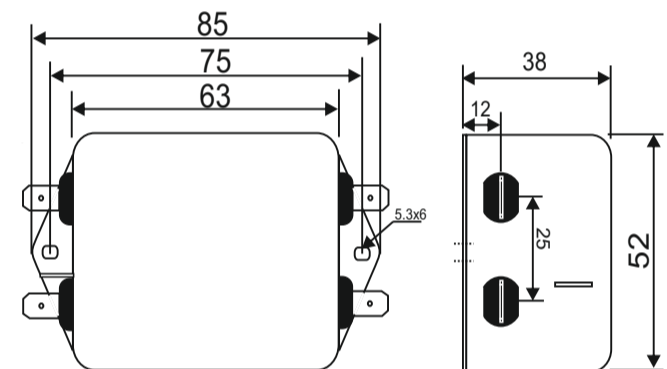
Maximum continuous operating voltage: 250VAC, 50/60Hz  
 Operating frequency: DC to 400Hz  
 Rated currents: 5 to 30A @ 40°C max.  
 High potential test voltage: L → PE 2250VDC for 2 sec (standard types)  
 L → PE 3500VDC for 2 sec (B types)  
 L → N 1450VDC for 2 sec  
 Temperature range (operation and storage): -25°C to +85°C (25/100/21)  
 Design corresponding to: UL 1283.

### Typical Application

- Electrical and electronic equipment
- Consumer goods
- Household equipment
- Medical equipment
- Electronic data processing equipment
- Office automation and datacom equipment
- Industrial application
- Machinery
- Various noisy application requires good attenuation performance filter

### 2 MECHANICAL DIMENSION (mm):

CONNECTION TYPE -F (5A TO 20A)  
S(30A)



#### NOTE:

All Dimension in mm  
 Connection type F-Fast On Terminal(6.3x0.8)  
 S-Screw (M4)

### 3 FILTER SELECTION TABLE

PART NO	RATED CURRENT @40°C	LEKAGE CURRENT 250VAC,50Hz	INDUCTANCE L (mH)	CAPACITANCE Cx (uF)	CAPACITANCE Cy (nF)	CONNITION TYPE
BL2650-05-F	5	0.8 mA	5	200	6.6	FASTON
BL2650-10-F	10	0.8 mA	3	200	6.6	FASTON
BL2650-15-F	15	0.8 mA	2	200	6.6	FASTON
BL2650-20-F	20	0.8 mA	0.9	200	6.6	FASTON
BL2650-30-S	30	0.8 mA	0.5	200	6.6	FASTON

### 4 INSERTION LOSS (CM-COMMON MODE VS DM- DIFFERENTIAL MODE)

PART NO	CURRENT RATING	FREQUENCY (MHz)	0.1	0.5	1.0	5.0	10.0	30.0
BL2650-05-F	5A	CM(dB)	5	42	38	35	38	32
		DM(dB)	30	40	33	29	31	27
BL2650-10-F	10A	CM(dB)	5	44	42	39	40	38
		DM(dB)	10	36	35	41	43	38
BL2650-15-F	15A	CM(dB)	23	39	31	30	33	23
		DM(dB)	9	39	37	33	36	27
BL2650-20-F	20A	CM(dB)	15	22	26	30	34	39
		DM(dB)	9	32	31	36	39	34
BL2650-30-S	30A	CM(dB)	16	24	26	29	38	39
		DM(dB)	14	22	34	35	42	40