

General Purpose EMI Filter



- Rated current from 5 to 20 A
- Single stage filter
- High differential mode performance
- Optional medical version (Type B)
- Optional safety version (Type A)

Approvals:



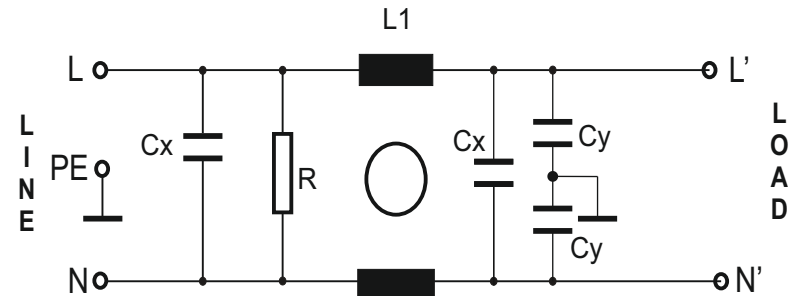
Technical specifications

Maximum continuous operating voltage: 250VAC, 50/60Hz
 Operating frequency: DC to 400Hz
 Rated currents: 5 to 20A @ 40°C max.
 High potential test voltage: L → PE 2250VDC for 2 sec (standard types)
 L → PE 3500VDC for 2 sec (B types)
 L → N 1450VDC for 2 sec
 Temperature range (operation and storage): -25°C to +85°C (25/100/21)
 Design corresponding to: UL 1283.

Typical Application

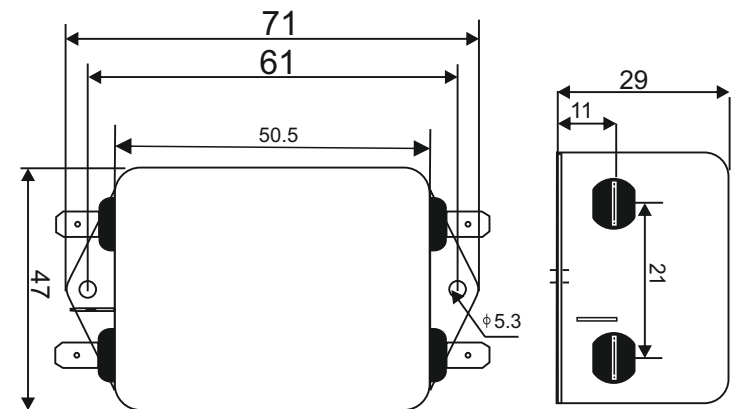
- Electrical and electronic equipment
- Consumer goods
- Household equipment
- Medical equipment
- Electronic data processing equipment
- Office automation and datacom equipment
- Industrial application
- Machinery
- Various noisy application requires good attenuation performance filter

1- CIRCUIT DIAGRAM:



2- MECHANICAL DIMENSION (mm):

CONNECTION TYPE -F
5A to 20A



NOTE:
All Dimension in mm
Connection type F-Fast On Terminal(6.3x0.8)
S-Screw (M4)

3- FILTER SELECTION TABLE

PART NO	RATED CURRENT @40°C	LEKAGE CURRENT 250VAC,50Hz	INDUCTANCE L (mH)	CAPACITANCE Cx (uF)	CAPACITANCE Cy (nF)	CONNETION TYPE
BL2620-05-F	5	0.8 mA	1.7	200	6.6	FASTON
BL2620-10-F	10	0.8 mA	1.2	200	6.6	FASTON
BL2620-15-F	15	0.8 mA	0.9	200	6.6	FASTON
BL2620-20-F	20	0.8 mA	0.5	200	6.6	FASTON

4- INSERTION LOSS (CM-COMMON MODE VS DM- DIFFERENTIAL MODE)

PART NO	CURRENT RATING	FREQUENCY (MHz)	0.1	0.5	1.0	5.0	10.0	30.0
BL2620-05-F	5A	CM(dB)	18	28	32	44	46	41
		DM(dB)	7	37	38	46	42	37
BL2620-10-F	10A	CM(dB)	17	25	28	35	37	40
		DM(dB)	10	36	35	41	43	38
BL2620-15-F	15A	CM(dB)	15	20	23	32	33	41
		DM(dB)	11	32	28	37	39	42
BL2620-20-F	20A	CM(dB)	9	18	24	32	35	50
		DM(dB)	7	27	28	36	39	46