

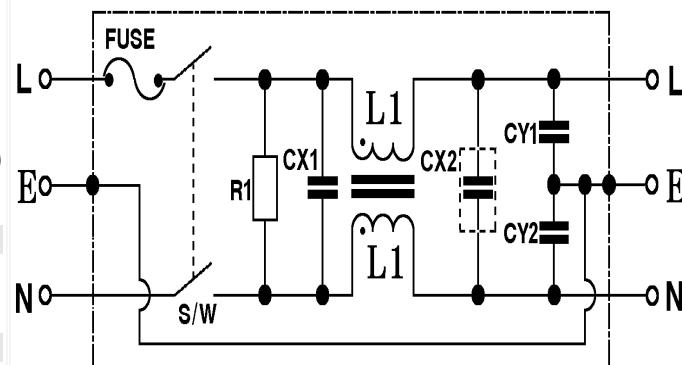
IEC Inlet Filters With Switch and Fuse

Feature and Benefits

- Current ratings, 2 To 10 Ampere. Rated at 250V.
- The BL9010 series of general purpose IEC inlet filters offer good performance for both common mode and differential mode interference, in a standard compact size.
- A standard IEC inlet filter available from BLA with quick and easy mounting.
- Also available with increased x and y caps for optimum performance.
- All filters retain the expected filter performance even in very noisy applications and under full load conditions



ELECTRICAL SCHEMATIC



Technical specifications

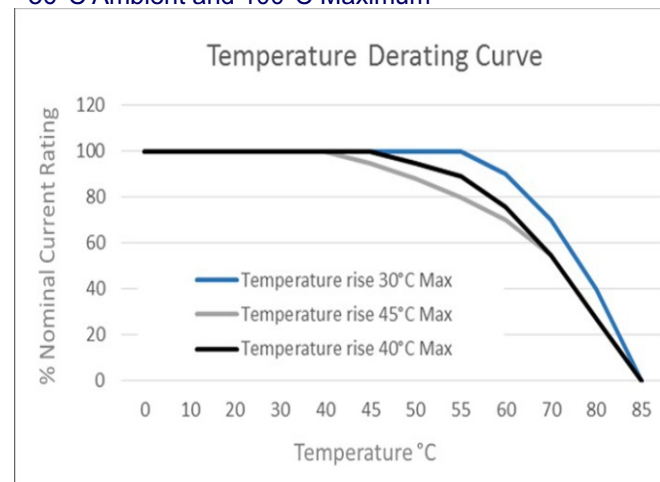
Maximum continuous operating voltage	3x480/277 VAC, 50/60Hz
Operating Frequency	50/60Hz
Rated Currents	7 to 180A @50°C
High Potential Test voltage	L-GND 2650 VDC for 2 sec (BL370) L-GND 2750 VDC for 2 sec (BL370H) L - L 2250 VDC for 2 sec
Temperature range (operation and storage)	-25°C to +100°C (25/100/21)
Certified to	UL 1283, EC/EN60939 (Applies to AC and DC Applications)
Flammability Corresponding to	UL 94V-2 better
Protection Category	IP 20
Overload Capability	1.5x Rated Current for 60 sec, once/hour

- New solid safety connector blocks available for the whole range
- Exceptional attenuation performance from 150 kHz to 30 MHz
- Excellent saturation resistance up to 50 m cable length
- Most compact and slim filter design in fit with class C1 & C2 limit

Typical Application

- Digital Equipment
- Point-of-sale equipment
- Printers
- Inverters
- Vending and Gaming machines

Temperature Derating Curve for EMC Filters Rated at 50°C Ambient and 100°C Maximum



FILTER SELECTION TABLE

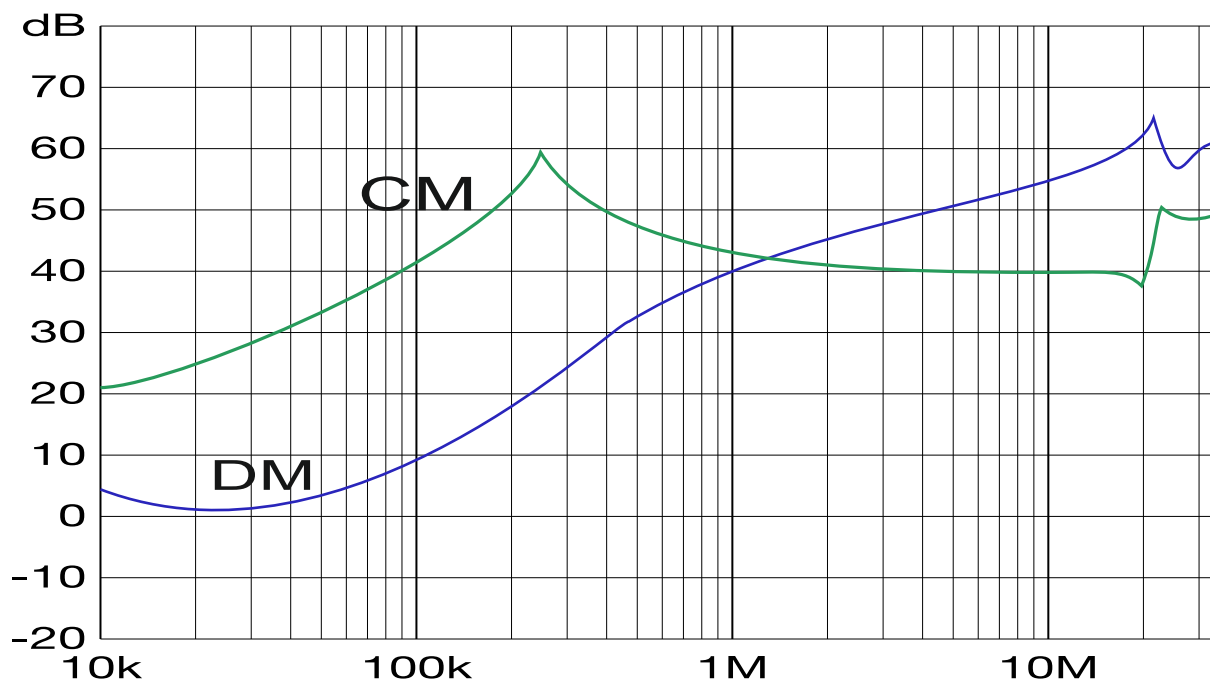
	Fuse-Rated	Inductance	X-Capacitor	X-Capacitor	Resistor	Y-Capacitor
Model No.	Current[A]	LI[mH],+50,-30%	CX1[μ F] $\pm 20\%$	CX2[μ F] $\pm 20\%$	R1[Ω] $\pm 10\%$	CY1,2[pF] $\pm 20\%$
BL9010-2-F	2	10.5	0.1	0.22	1M1/2W	
BL9010-4-F	4	4.2	0.47	0.22	510K,1/2W	
BL9010-6-F	6	1.6	0.1	0.22	1M1/2W	2200
BL9010-8-F	8	1.6	0.47	0.22	510K,1/2W	
BL9010-10-F	10	1.6	0.47	0.22	1M1/2W	

Maximum leakage under normal operating conditions. Note: if the neutral line is interrupted, worst case leakage could reach twice this level.

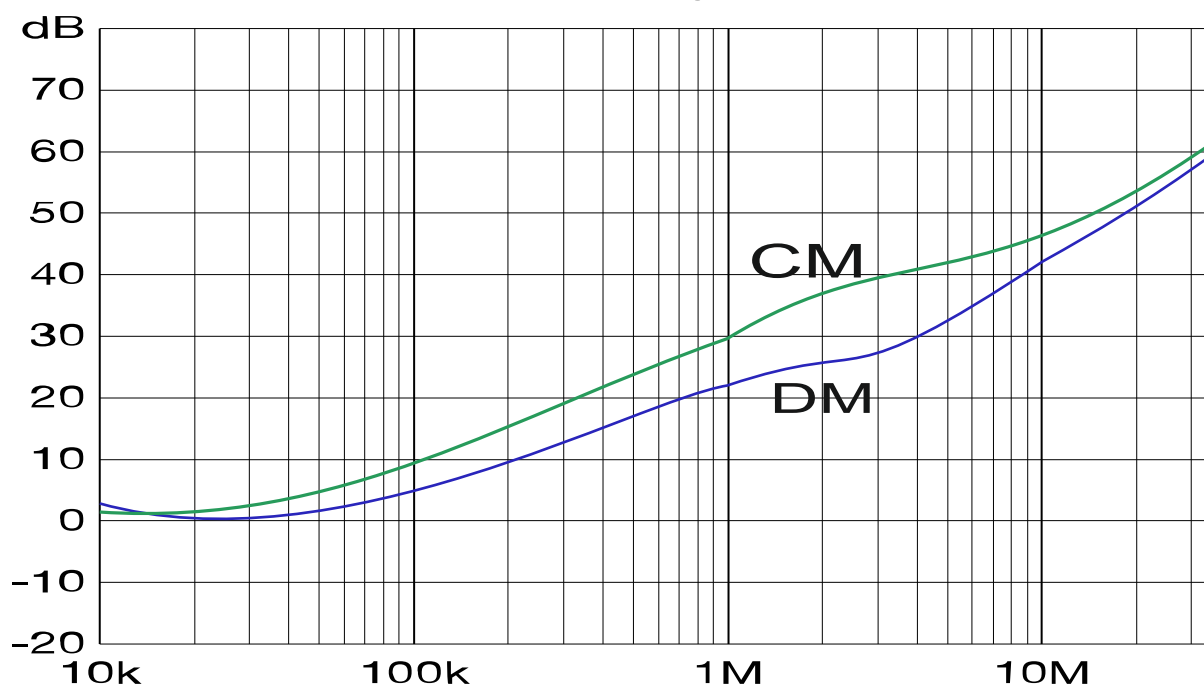
* Customization Available in the Filter according to Applications for high Performance & value.

TYPICAL INSERTION LOSS, dB (50/50 Ohm)

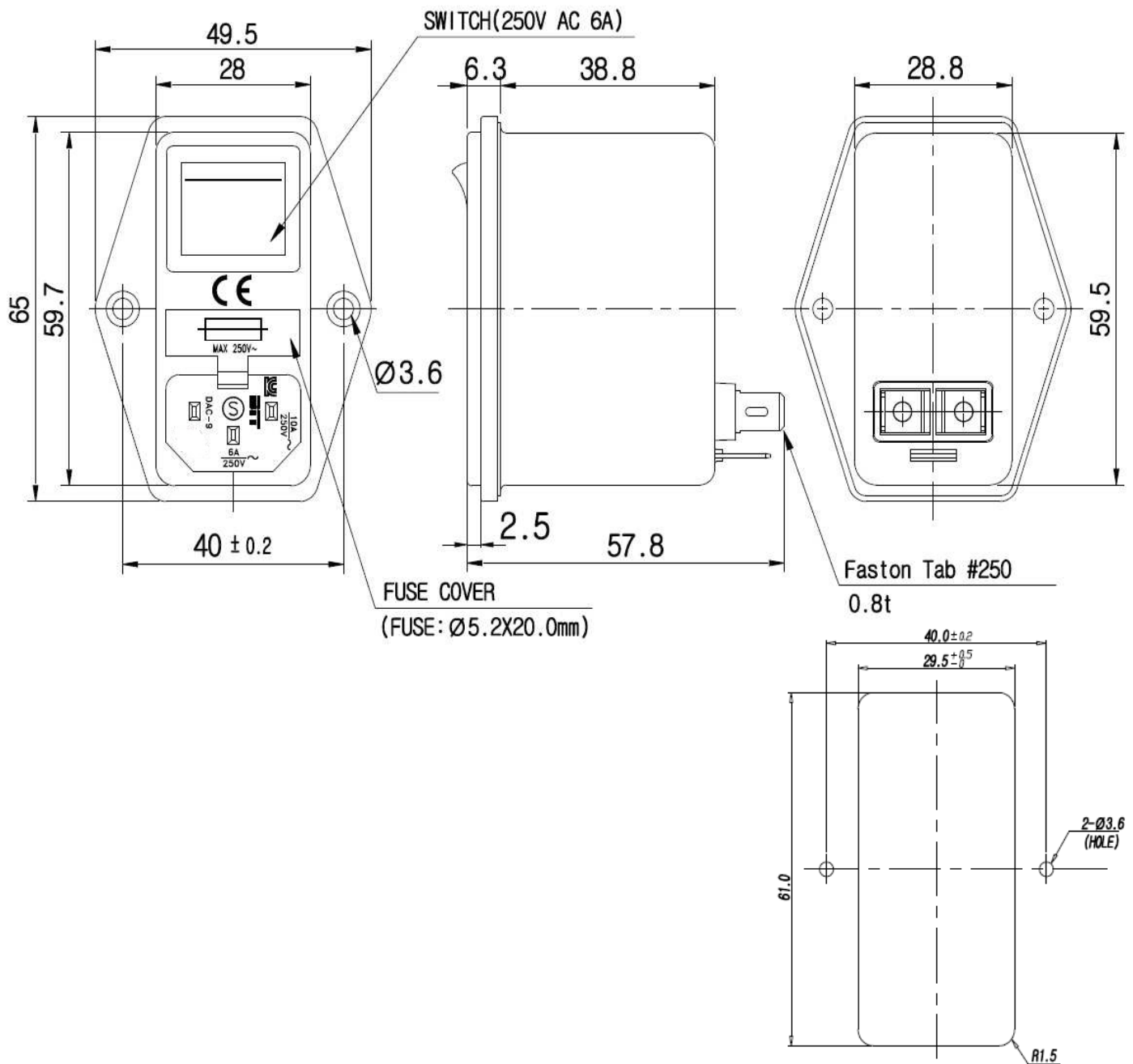
1 and 3 A types



6 to 10 A types



MECHANICAL DETAILS



**All Dimension are in mm
 General tolerance: ±1.0

* Panel cutout dimensions
 mount from frontside.