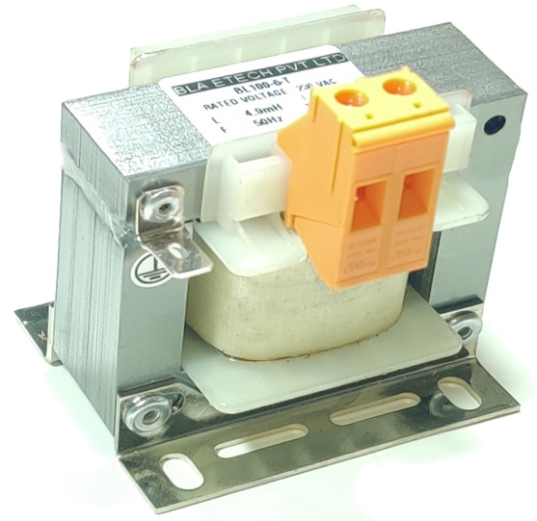


## DC CHOKE

### Feature and Benefits

- Available from 2A to 125A Current Rating
- Compact design
- Extended lifetime of electrical consumers
- Low-temperature rise
- Attenuation of current spikes of up to 60%
- Reduction of the input current up to 20%
- Low noise
- Production according to UL insulation system E251513 is possible



### Technical Details

- Rated voltage:  $U \leq 250 \text{ V}$
- Short circuit: Uk 4% (230VAC/50Hz, INenn)
- Frequency: 50/60 Hz
- According to: EN 60289 / EN 61558
- Test voltage: L-PE 2500 V, DC 1min
- Insulation class: T40/F
- Protection rating: IP00
- Climatic categorie: DIN IEC 60068-1
- Overload: 1,5 x INenn 1 min / h

Design: mounted on footprint

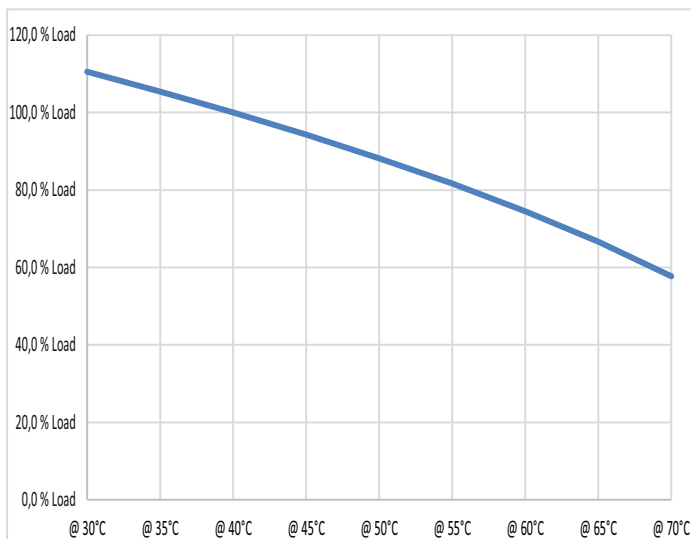
### Typical Application

- Electrical and electronic equipment
- Consumer goods
- EV Application, Conveyor technology, Ventilation and air conditioning
- Medical equipment, Power supplies
- Electronic data processing equipment
- Very Noisy Application high performance Filter
- Motor drive and VFD, Automation

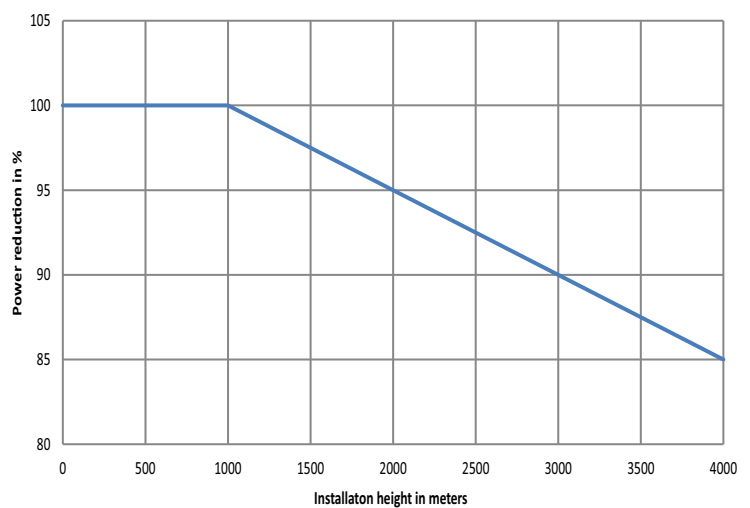
**TECHNICAL SPECIFICATION**

| Type        | Nominal Voltage (V) | Nominal Current I(A) | Nominal inductance L (mH) | Losses P (W) | Weight (Kg) | Weight Cu (Kg) |
|-------------|---------------------|----------------------|---------------------------|--------------|-------------|----------------|
| BL100-2-T   | 230V 50/60 Hz       | 2                    | 14.5                      | 7            | 0.5         | 0.2            |
| BL100-4-T   |                     | 4                    | 7.3                       | 11.3         | 0.5         | 0.2            |
| BL100-6-T   |                     | 6                    | 4.88                      | 13.5         | 0.6         | 0.2            |
| BL100-10-T  |                     | 10                   | 2.9                       | 34           | 0.7         | 0.2            |
| BL100-16-T  |                     | 16                   | 1.8                       | 25           | 1.2         | 0.4            |
| BL100-20-T  |                     | 20                   | 1.5                       | 28           | 2           | 0.4            |
| BL100-25-T  |                     | 25                   | 1.1                       | 32           | 2           | 0.4            |
| BL100-35-T  |                     | 35                   | 0.84                      | 42           | 2.9         | 0.6            |
| BL100-40-T  |                     | 40                   | 0.73                      | 42           | 3.6         | 0.8            |
| BL100-50-T  |                     | 50                   | 0.57                      | 50           | 4.6         | 1              |
| BL100-63-T  |                     | 63                   | 0.5                       | 61           | 5.2         | 1.3            |
| BL100-75-T  |                     | 75                   | 0.4                       | 70           | 6.9         | 1.6            |
| BL100-100-T |                     | 100                  | 0.29                      | 86           | 8           | 2              |
| BL100-125-T |                     | 125                  | 0.25                      | 86           | 8           | 2              |

**DERATING**

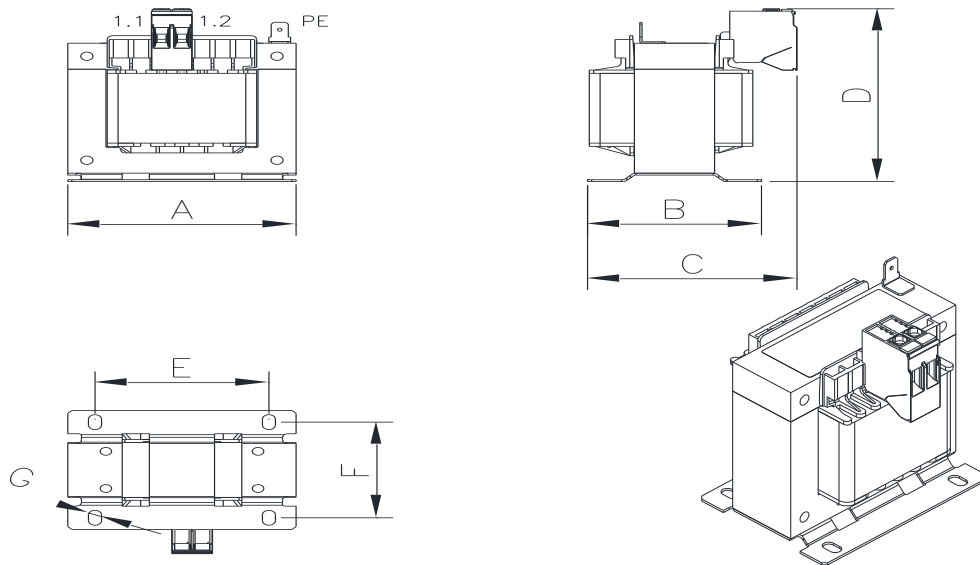


**POWER REDUCTIONS**

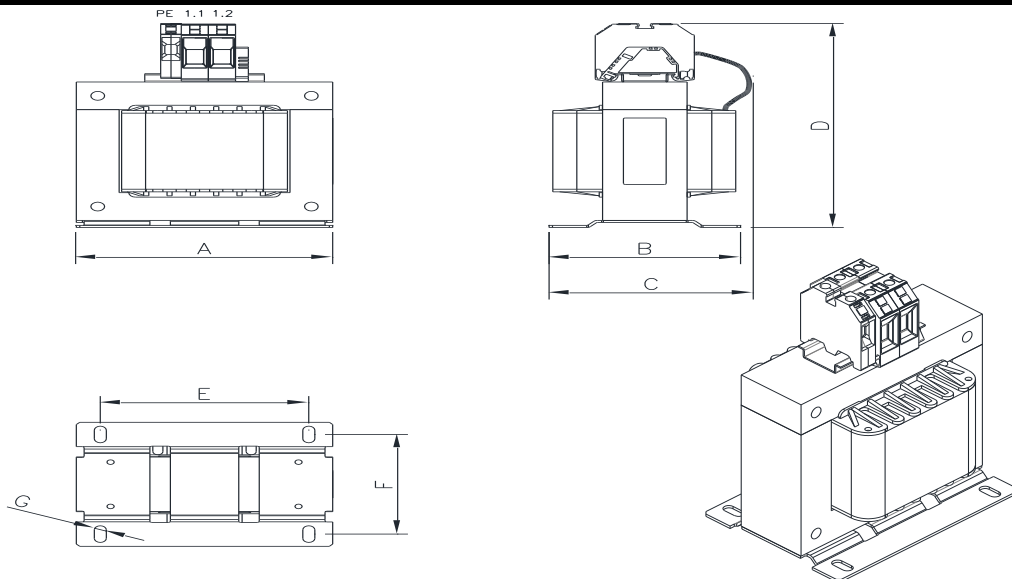


## MECHANICAL DETAILS

1.



2.



## DIMENSIONAL DETAILS

| Product Part No | Constructor drawing | A      | B      | C      | D      | E      | F      | G     |
|-----------------|---------------------|--------|--------|--------|--------|--------|--------|-------|
|                 | -                   | [ mm ] | [ mm ] | [ mm ] | [ mm ] | [ mm ] | [ mm ] | [ ∅ ] |
| BL100-2-T       | 1                   | 66     | 55     | 62     | 80     | 50     | 42     | 4.8   |
| BL100-4-T       | 1                   | 66     | 55     | 62     | 80     | 50     | 42     | 4.8   |
| BL100-6-T       | 1                   | 66     | 55     | 62     | 80     | 50     | 42     | 4.8   |
| BL100-10-T      | 1                   | 66     | 55     | 62     | 80     | 50     | 42     | 4.8   |
| BL100-16-T      | 1                   | 66     | 55     | 62     | 80     | 50     | 42     | 4.8   |
| BL100-20-T      | 1                   | 84     | 64     | 87     | 98     | 64     | 51.5   | 4.8   |
| BL100-25-T      | 1                   | 84     | 64     | 87     | 98     | 64     | 51.5   | 4.8   |
| BL100-35-T      | 1                   | 120    | 92     | 110    | 130    | 90     | 73     | 5.8   |
| BL100-50-T      | 1                   | 120    | 92     | 110    | 130    | 90     | 73     | 5.8   |
| BL100-63-T      | 2                   | 120    | 92     | 110    | 130    | 90     | 73     | 5.8   |
| BL100-75-T      | 2                   | 120    | 92     | 92     | 160    | 90     | 73     | 5.8   |
| BL100-100-T     | 2                   | 150    | 112    | 116    | 185    | 122    | 90     | 7.0   |
| BL100-125-T     | 2                   | 150    | 112    | 128    | 210    | 122    | 106    | 7.0   |

\*\*All Dimension are in mm