

Approvals:



The VP (Very high performance) filter range are designed and tested for shielded room requirements, for attenuation from 100kHz – 10GHz at 100dB. Shielded rooms require high levels of attenuation to ensure no conducted / radiated emissions are either imported or exported from the room. The filters come in 2, 3 or 4 line formats and have current ratings up to 3000Amps per phase. Transient suppression can be added as an option to the filters to give protection against induced transients from EMP sources. The filters are housed in steel enclosures that are then plated & painted for protection.

TECHNICAL SPECIFICATION

- Current Rating: 3-1000+ Amps
- Operating Voltage: Single Phase, Two Phase & Three Phase. 230V to 520VAC
- Maximum continuous operating voltage: 520VAC, 50/60Hz
- Operating frequency: DC to 50/60 Hz
- Rated currents: upto 1000+A @ 40°C max.
- High potential test voltage: L → PE 3000VDC for 2 sec (standard types)
- L → PE 3500VDC for 2 sec
- L → N 1100VDC for 2 sec
- Temperature range (operation and storage): -25°C to +85°C (25/85/21)
- Design corresponding to: UL 1283,

STANDREDS

The VP range of filters are built in accordance with the relevant BS, VDE, UL, CE & CSA safety standards. This range also conforms to MIL- STD 220A and the electrical characteristics of Mil-F-15733. All BLA Etech Pvt Ltd. filters & power supplies are designed to meet the latest requirements for Health and Safety, Particularly EN 60939-2-2005.

FEATURE AND BENEFITS

Commercial Advantages

- Assists compliance with the EMC directive
- State of the art technology ensures superior performance
- Competitively priced
- Compact size
- Reduced weight
- Cost effective component

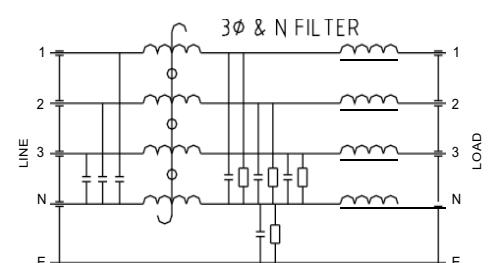
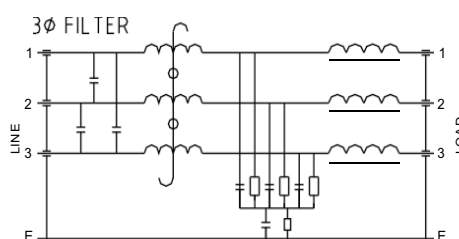
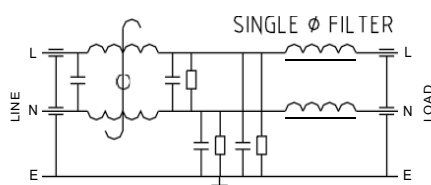
Technical Advantages

- High current capability - Micro size
- High common & differential mode insertion loss
- Improved low frequency performance
- Optional input transient suppression to suit application
- Transient protection available

TYPICAL APPLICATION

- Shielded enclosures
- IT installation
- Computer rooms
- Banks
- Military installations

CIRCUIT DIAGRAM

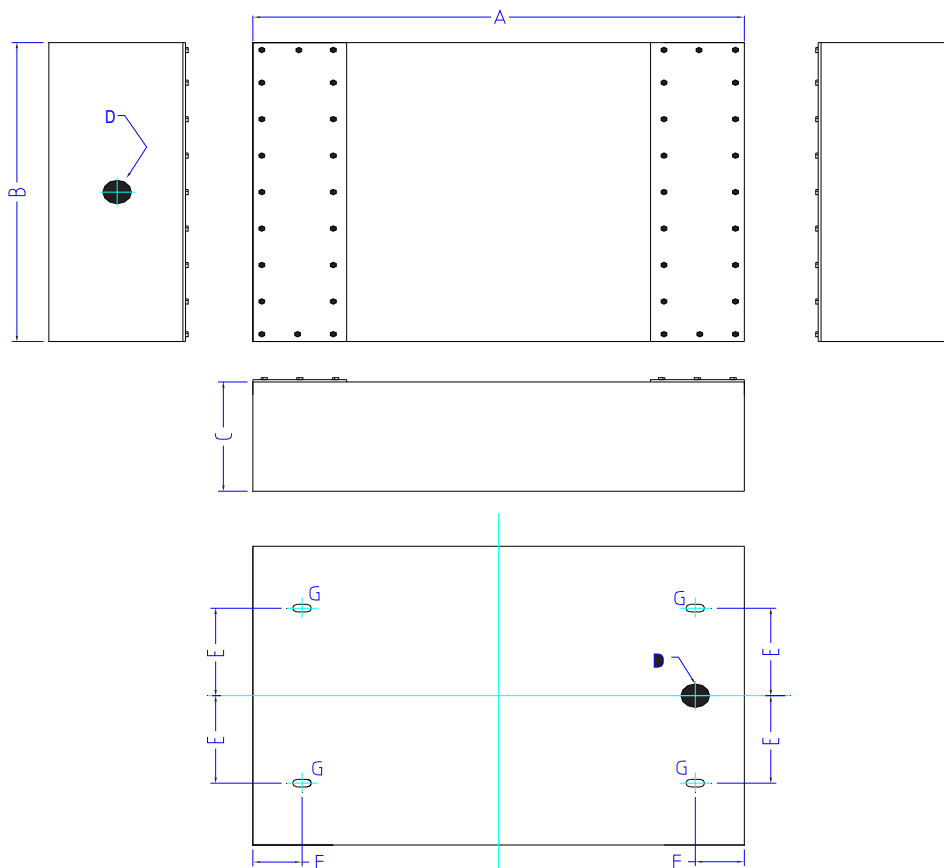


TECHNICAL SPECIFICATION

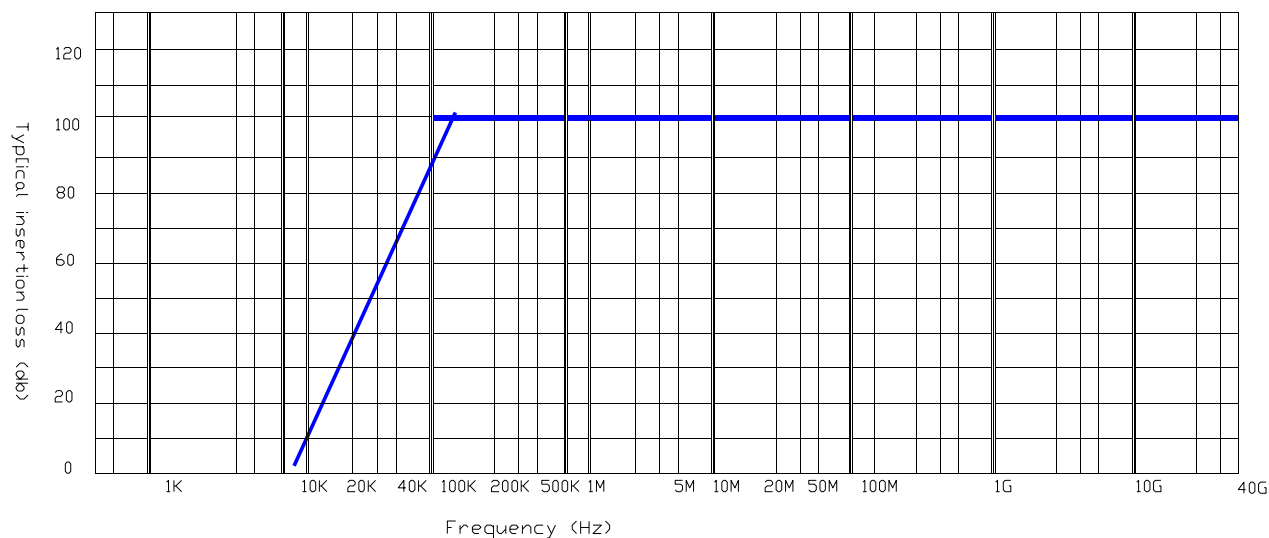
Current (Amps)	No of Lines	Max Voltage / Frequency		Max AC Volt Drop @ Full Load	Typical Earth Leakage mA (Worst case)			Inductance Per Line (Typical) mH	Transient Energy Absorption (Typical)	Storage Temp Range	Operating Temp.	Temp Rise @ Full Load	Termination Type	Weight (Kg) (approx)	
		2 LINE	3 / 4 LINE		Std	LE	400 Hz							2 Line	4 line
3-6	2/3/4	275V AC	440V AC	<2V/Line	200	20	200	7	50J Optional	-25 ~ +85°C	-20 - +50°C	<35°C	M5 BOLT	4	10
10-16					500	20	200	5	75J Optional				M5 BOLT	5	10
25 - 32					500	20	500	3	75J Optional				M6 BOLT	9	10
50 - 63					1000	40	1000	2	75J Optional				M8 BOLT	9	10
80 -100					2000	40	2000	0.7	150J Optional				M10 BOLT	26	20
200					2000	40	4000	0.3	150J Optional				M10 BOLT	29	30
400					2000	80	4000	0.2	200J Optional				M16 BOLT	39	42

FILTER SELECTION TABLE

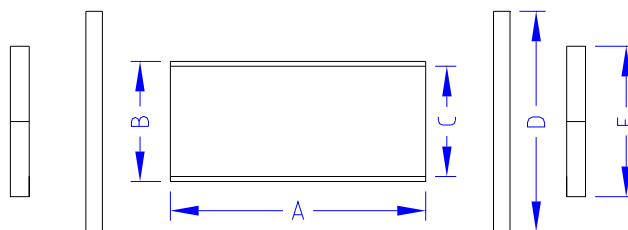
AMP	LINE 2	A mm	B mm	C mm	D mm	E mm	F mm	G mm	LINE 3	A mm	B mm	C mm	D mm	E mm	F mm	G mm	LINE 4	A mm	B mm	C mm	D mm	E mm	F mm	G mm			
3-6		400	90	45	20.5	24	57	6.5		370	200	90	32	60	56	6.5		370	200	90	32	60	56	6.5			
10-16		400	90	45	20.5	24	57	6.5		370	200	90	32	60	56	6.5		370	200	90	32	60	56	6.5			
25 - 32		370	200	90	25	60	56	6.5		370	200	90	32	60	56	6.5		370	200	90	32	60	56	6.5			
50 - 63		370	200	90	25	60	56	6.5		400	300	120	32	100	51	8.5		400	300	120	32	100	51	8.5			
80 -100		560	215	120	32	53.8	45	8.5		550	410	150	63	120	45	10.5		550	410	150	63	120	45	10.5			
200		560	215	120	32	53.8	45	8.5		550	410	150	63	120	45	10.5		550	410	150	63	120	45	10.5			
400			740	410	200	50	150	65		12		970	510	200	50	150		65	12		970	510	200	50	150	65	12



Performance characteristics insertion loss curves



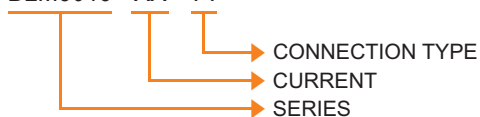
Additional Options- EMC Threaded Bulkhead Gland



BULKHEAD GLAND DETAILS					
	A	B	C	D (Washer x 2)	E (Lock Nut x 2)
TYPE A	54mm	M25	22mm	44mm	30mm A/F
TYPE B	57mm	M20	17mm	36.5mm	24mm A/F
TYPE C	60mm	M32	29mm	TBA	TBA
TYPE D	60mm	M50	45mm	TBA	TBA
CUSTOM	BLA are able,if you require custom Gland solution.				

ORDERING INFO.--

PART NO- BLM8013 - XX - YY*



* S- SCREW, B- BUS BAR, F- FASTON