



BLA ETECH PVT. LTD.

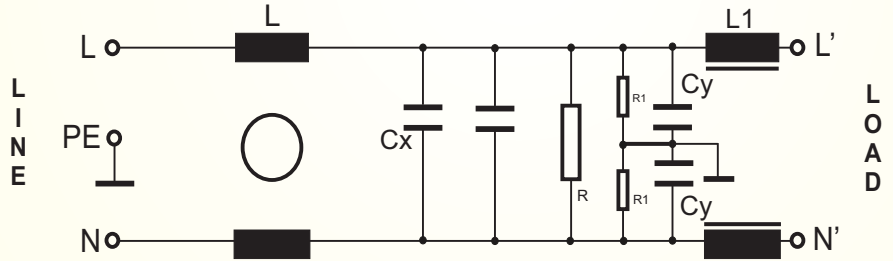
EMC, EMI FILTER & POWER SOLUTION

Single Phase Filter BLAEG00-XXX-F/S

Military DC Drive Filter with very high performance



CIRCUIT DIAGRAM:



Technical Specification

Max Rated Voltage 120 VDC

Operating Frequency DC

Rated Current 1A to 50A @40°C

Hipot Test Voltage-

L-L 1100VDC 2sec

L-G 3000VDC 2sec

Temperature Range -25 to +100°C(25/100/21)

- Rated currents from 1 to 50A
- Two stage filter
- High differential and common mode attenuation
- Optional filter for 400KHz as per military standard
- Optional safety versions

Applications:

- Power Control Equipment for DC Lines use in military
- Industrial Equipment Vulnerable to Transients on the DC Power Line (Computers, Traffic Controls, Motor Controllers, Etc.)
- Communications systems and other heavy-duty systems,
- Protection of Equipment Connected to Telephone or Signal Lines, Such as Security Systems, Railroad Equipment, Fire Alarm Systems, Etc
- Thyristor Driven control equipment .
- Scaled-down versions of these devices are sometimes installed in residential service entrance electrical panels, to protect equipment in a household from similar hazards

Features:

- Nanosecond Switching Response Time, <15 ns, with Minimal Lead Length.
- Various noisy applications requires high performance filter.
- No Extinguishing or Follow-On Current Limitations.

Benefits:

- Eliminates Dangerous Voltage Transients.
- Lowers Overall System Costs by Reducing Downtime and Maintenance Costs.
- Improves Component and System Reliability.
- Reduces EMP/RFI Interference.

FILTERS SELECTION TABLE

SN	PART NO	RATED CURRENT @40°C A	LEAKAGE CURRENT 250V/50Hz mA	MECHANICAL DIMENSION L X W X H (mm)	CONNECTION TYPE
1	BLAEG00-1-F	1	0.75	85 X 50 X 36	FAST ON
2	BLAEG00-3-F	3	0.75	85 X 50 X 36	FAST ON
3	BLAEG00-6-F	6	0.75	124 X 70 X 51	FAST ON
4	BLAEG00-10-F	10	0.75	124 X 70 X 51	FAST ON
5	BLAEG00-16-F/S	16	0.75	124 X 70 X 51	FAST ON/SCREW
6	BLAEG00-25-F/S	25	0.80	119 X 85.5 X 57.5	FAST ON/SCREW
7	BLAEG00-50-F/S	50	0.80	119 X 85.5 X 57.5	FAST ON/SCREW

- The BLAEG00-XXX-X also offer good range amperage ratio/size and cover large scale usage

- BLAEG00-XXX-X are also available in various terminal options which allow you to select desired connection type

- BLAEG00-XXX-X are also available from 12-48 VDC category for military DC drive system

REMARK

** FASTON TERMINAL SIZE 6.38 X 0.8 mm

***SCREW SIZE AS PER CUSTOMER REQUIREMENT

INSERTION LOSS(dB)

1A

MHZ	0.5	1	2	5	10
CM	82	61	60	44	35
DM	35	59	53	42	25

3A

MHZ	0.5	1	2	5	10
CM	83	68	51	48	37
DM	36	61	56	45	26

6A

MHZ	0.5	1	2	5	10
CM	78	68	50	45	26
DM	30	71	59	45	26

10A

MHZ	0.5	1	2	5	10
CM	78	61	49	43	31
DM	36	60	53	39	30

16A

MHZ	0.5	1	2	5	10
CM	88	63	48	40	29
DM	32	72	59	48	26

25A

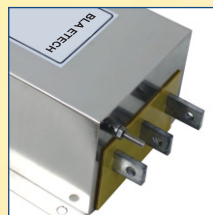
MHZ	0.5	1	2	5	10
CM	72	66	50	40	30
DM	35	69	57	42	29

50A

MHZ	0.5	1	2	5	10
CM	75	59	47	40	29
DM	32	69	59	48	26

CORPORATE OFFICE AND MANUFACTURING UNIT

**BLA ETECH PVT LTD
A-42
WAZIRPUR INDUSTRIAL AREA
NEW DELHI-110052
INDIA**



CONTACT DETAIL

WEB- www.blaetech.com

Email- info@blaetech.com

TEL- +91-11-47483290

Mob-+91-9899197050