



BLA ETECH PVT. LTD.

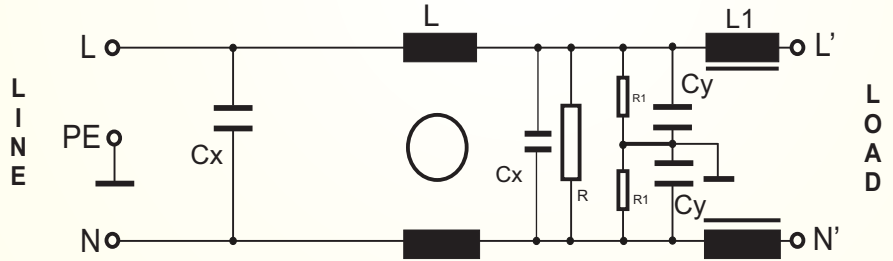
EMC, EMI FILTER & POWER SOLUTION

Single Phase Filter BLAE010-XXX-F/S

EMI Filter for military with very high performance



CIRCUIT DIAGRAM:



Technical Specification

Max Rated Voltage 250VAC

Operating Frequency 50/60Hz

Rated Current 1A to 10A @40°C

Hipot Test Voltage-

L-L 1100VDC 2sec

L-G 3000VDC 2sec

Temperature Range -25 to +100°C(25/100/21)

- Rated currents from 1 to 10A
- Two stage filter
- High differential and common mode attenuation
- Optional filter for 400KHz as per military standard
- Optional safety versions

Applications:

- Power Control Equipment for Power Distribution Lines use in military
- Industrial Equipment Vulnerable to Transients on the AC Power Line (Computers, Traffic Controls, Motor Controllers, Etc.)
- Communications systems and other heavy-duty industrial systems,
- Protection of Equipment Connected to Telephone or Signal Lines, Such as Security Systems, Railroad Equipment, Fire Alarm Systems, Etc
- For the purpose of protecting against electrical surges and spikes, including those caused by lightning.
- Arc Suppression Across Relay and Switch Contacts
- Scaled-down versions of these devices are sometimes installed in residential service entrance electrical panels, to protect equipment in a household from similar hazards

Features:

- Nanosecond Switching Response Time, <15 ns, with Minimal Lead Length.
- Various noisy applications requires high performance filter.
- No Extinguishing or Follow-On Current Limitations.

Benefits:

- Eliminates Dangerous Voltage Transients.
- Lowers Overall System Costs by Reducing Downtime and Maintenance Costs.
- Improves Component and System Reliability.
- Reduces EMP/RFI Interference.

FILTERS SELECTION TABLE

SN	PART NO	RATED CURRENT @40°C A	LEAKAGE CURRENT 250V/50Hz mA	MECHANICAL DIMENSION L X W X H (mm)	CONNECTION TYPE
1	BLAE010-1-F	1	3.75	119 X 55 X 33	FAST ON
2	BLAE010-2-F	2	3.75	119 X 55 X 33	FAST ON
3	BLAE010-3-F	3	3.75	119 X 55 X 33	FAST ON
4	BLAE010-4-F	4	3.75	119 X 55 X 33	FAST ON
5	BLAE010-6-S	6	3.75	172 X 72 X 65	SCREW
6	BLAE010-10-S	10	4.0	172 X 72 X 65	SCREW

- The BLAE010-XXX-X also offer good range amperage ratio/size and cover large scale usage

- BLAE010-XXX-X are also available in various terminal options which allow you to select desired connection type

REMARK

** FASTON TERMINAL SIZE 6.38 X 0.8 mm

***SCREW SIZE AS PER CUSTOMER REQUIREMENT

INSERTION LOSS(dB)

1A

MHZ	0.5	1	2	5	10
CM	85	65	59	44	25
DM	35	62	53	42	25

2A

MHZ	0.5	1	2	5	10
CM	82	66	51	45	27
DM	36	61	56	45	26

3A

MHZ	0.5	1	2	5	10
CM	85	61	50	42	26
DM	31	69	59	45	21

4A

MHZ	0.5	1	2	5	10
CM	78	64	49	43	31
DM	36	63	53	39	30

6A

MHZ	0.5	1	2	5	10
CM	80	63	48	40	29
DM	32	68	59	48	26

10A

MHZ	0.5	1	2	5	10
CM	79	69	50	40	30
DM	35	62	57	42	29

CORPORATE OFFICE AND MANUFACTURING UNIT

**BLA ETECH PVT LTD
A-42
WAZIRPUR INDUSTRIAL AREA
NEW DELHI-110052
INDIA**



CONTACT DETAIL

**WEB- www.blaetech.com
Email- info@blaetech.com
TEL- +91-11-47483290
Mob-+91-9899197050**